



- 额定电流最高达 30A
Rated currents up to 30A
- 极强的 EMC 滤波性能
High EMC Filter Performance
- 端子式连接方式
Terminal Block Connections
- 可选导轨安装方式
DIN-rail installation Filter
- 安规认证: 

特点 Features

- 高性能端子台式接线方式，使用更安全可靠端子排连接方式
High EMC performance filters with terminal block connection for safety and reliability.
- 良好的共模和差模干扰抑制特性。
Good performance of common mode and differential mode interference suppression
- 导轨式的安装方式，方便在电气柜内使用
DIN-rail filter version are ideal for panel build and electric cabinets

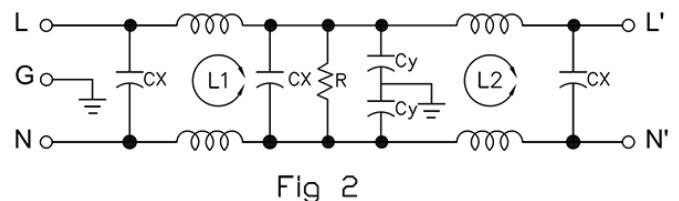
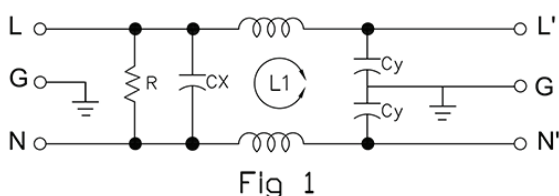
应用 Application

- 用于电子设备和电子测量仪器
Available for electronic equipments and measuring instruments
- 白色家电、单相工业设备、电源供应和控制系统
White goods, single phase industrial equipments, power supply systems and controls
- 用于单相电源，开关电源，PLC 控制器，控制系统上的变频器用
Single-phase power supplies, switch-mode power supplies, PLC controller, inverter based control system

技术参数 Technical Data

额定电压 Rated Voltage	125/250VAC
工作频率 Operation Frequency	50/60Hz
额定电流 Rated Current	3-30A
耐压测试 Hi-pot Test	1450VDC 2sec (线对线 Line to Line) 2250VDC 2sec (线对地 Line to Ground)
气候类别 Climate Category	25/85/21 (-25°C to +85°C)
设计参考标准 Design corresponding to	UL 1283, CSA 22.2 No. 8 1986, IEC/EN 60939

电路原理图 Electrical Schematic



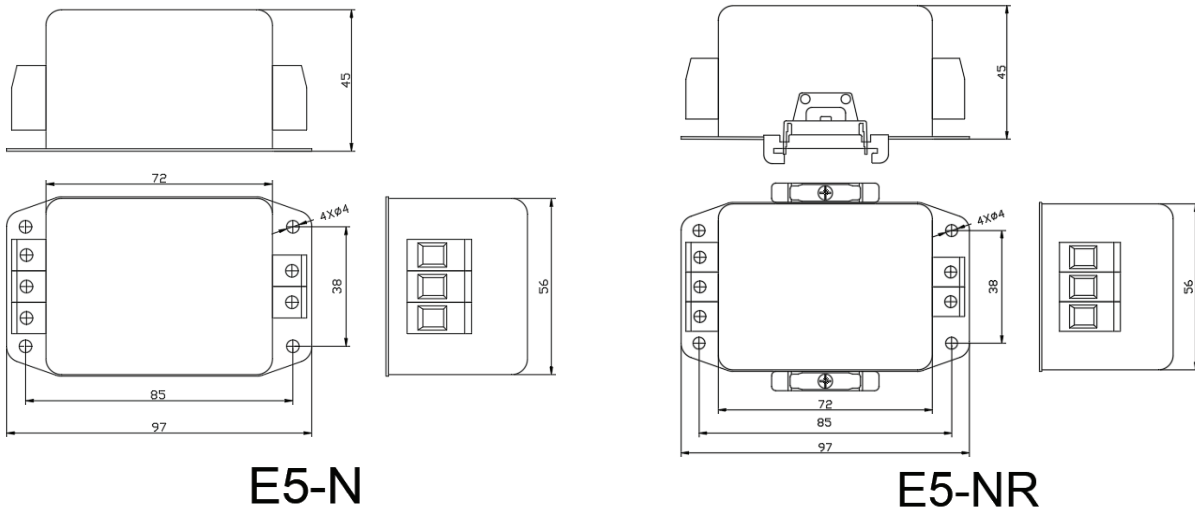
选型表 Type Selection Table

型号 Model	额定电流(A) Rated Current	泄漏电流(≤mA) Leakage Current	电路图 Circuit Diagram	外形尺寸 Dim. Fig.	安装方式 Installation Type	
					面板 Panel	导轨 Din Rail
DF200-3A-01N	3	0.5	Fig 1	E5-N / E5-NR	E5-N	E5-NR
DF200-6A-01N	6	0.5	Fig 1	E5-N / E5-NR	E5-N	E5-NR
DF200-10A-01N	10	0.5	Fig 1	E5-N / E5-NR	E5-N	E5-NR
DF200-20A-01N	20	0.5	Fig 1	E5-N / E5-NR	E5-N	E5-NR
DF200-30A-01N	30	1.0	Fig 1	E5-N / E5-NR	E5-N	E5-NR
DF202-3A-01N	3	0.5	Fig 2	E5-N / E5-NR	E5-N	E5-NR
DF202-6A-01N	6	0.5	Fig 2	E5-N / E5-NR	E5-N	E5-NR
DF202-10A-01N	10	0.5	Fig 2	E5-N / E5-NR	E5-N	E5-NR
DF202-20A-01N	20	0.5	Fig 2	E5-N / E5-NR	E5-N	E5-NR
DF202-30A-01N	30	1.0	Fig 2	E5-N / E5-NR	E5-N	E5-NR

INSTRUCTION: Model name follow by letter: N refer to panel installation type; Letter: NR refer to DIN-rail installation type

型号说明: 型号后面加字母 N 表示面板安装, 型号后加字母 NR 表示导轨式安装方式

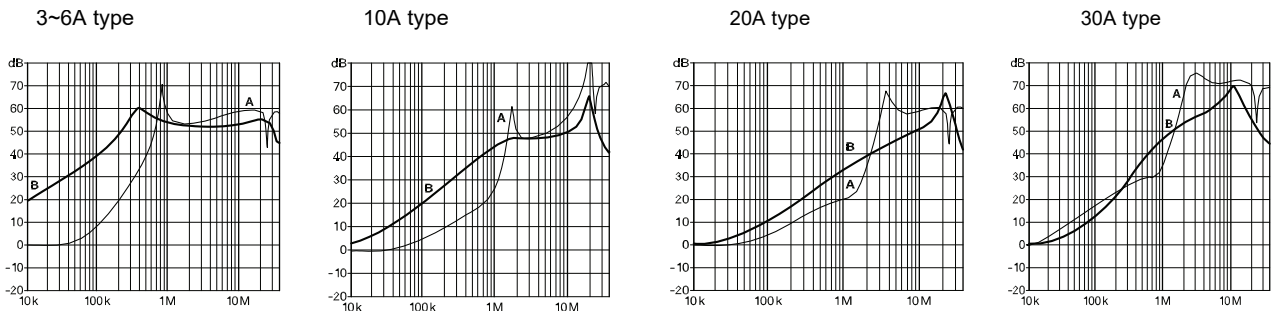
外形尺寸 Outline Dimensions(mm)



插入损耗 Insertion Loss in Db (DF202 type)

(50Ω/50Ω 环境下插入损耗 Insertion Loss in dB measured in a 50Ω/50Ω system, as IEC/CISPR No. 17)

A=Differential mode (差模) B=Common Mode(共模)



备注: 以上规格为公司标准产品, 可根据客户产品定制设计产品性能和尺寸外观

Remark: Customized products are available according to special performance or dimensions requirements

If any EMC test requirement, please contact sales@dephir.com

更多产品请登陆官方网站: <http://www.dephir.com>

For more products please go to official website: <http://www.dephir.com>